



Bihar Mausam Seva Kendra (BMSK)
(Department of Planning and Development, Govt. of Bihar)

Sl. No.	Zone	District	Rainfall Pattern during Kharif 2021					
			1 st to 31 st August 2021			1 st to 30 th September 2021		
			Nor (mm)	Actual	DEP (%)	Nor (mm)	Actual	DEP (%)
1	North West	East Champaran	308.2	372.9	17	308.2	68.5	-78
2		Gopalganj	284.8	336.9	15	284.8	104.0	-63
3		Saran	282.2	278.8	-1	282.2	140.4	-50
4		Siwan	282.4	332.3	15	282.4	119.3	-58
5		West Champaran	367.9	460.5	20	367.9	113.6	-69
6	North Central	Darbhanga	269.4	318.6	15	269.4	112.2	-58
7		Madhubani	279.8	341.6	18	279.8	74.4	-73
8		Muzaffarpur	284.1	522.6	46	284.1	81.6	-71
9		Samastipur	267.4	313.6	15	267.4	121.0	-55
10		Sheohar	292.6	451.3	35	292.6	70.5	-76
11		Sitamarhi	310.1	476.9	35	310.1	67.1	-78
12	North East	Vaishali	270	346.7	22	270.0	141.5	-48
13		Araria	345	372.2	7	345.0	104.8	-70
14		Kishanganj	473.5	621.7	24	473.5	191.5	-60
15		Madhepura	295.3	298.0	1	295.3	110.1	-63
16		Purnea	370	314.7	-18	370.0	96.1	-74
17		Saharsa	298.9	262.1	-14	298.9	91.5	-69
18		Supaul	283.6	400.6	29	283.6	92.8	-67
19	South West	Arwal	223.1	250.4	11	223.1	81.2	-64
20		Aurangabad	250.4	307.4	19	250.4	125.2	-50
21		Buxar	259.1	298.2	13	259.1	92.8	-64
22		Bhojpur	260.8	327.2	20	260.8	79.7	-69
23		Jehanabad	248.3	205.3	-21	248.3	84.7	-66
24		Kaimur (Bhabua)	278.9	271.4	-3	278.9	149.7	-46
25		Rohtas	268.1	278.4	4	268.1	114.2	-57
26	South Central	Begusarai	289.9	209.3	-39	289.9	116.3	-60
27		Gaya	248.7	265.7	6	248.7	140.1	-44
28		Lakhisarai	261.1	190.7	-37	261.1	98.3	-62
29		Nalanda	243.6	196.6	-24	243.6	109.7	-55
30		Nawada	249.6	182.6	-37	249.6	143.4	-43
31		Patna	255.7	192.8	-33	255.7	135.6	-47
32		Sheikhpura	227.4	222.5	-2	227.4	127.8	-44
33		South East	Banka	258.7	223.2	-16	258.7	144.3
34	Bhagalpur		262.8	158.9	-65	262.8	93.6	-64
35	Jamui		249.7	169.2	-48	249.7	144.3	-42
36	Katihar		268.8	313.5	14	268.8	64.7	-76
37	Khagaria		257	224.5	-14	257.0	81.5	-68
38	Munger	279.9	187.2	-50	279.9	105.0	-62	
State Average			281.8	302.6	7	281.8	108.8	-61
Large Excess (>+60%)								
Excess (+20% to +59%)								
Normal (-19% to +19%)								
Deficient (-59% to -20%)								
Large Deficient (<-60%)								
No Rain								

84°0.000'E

88°0.000'E

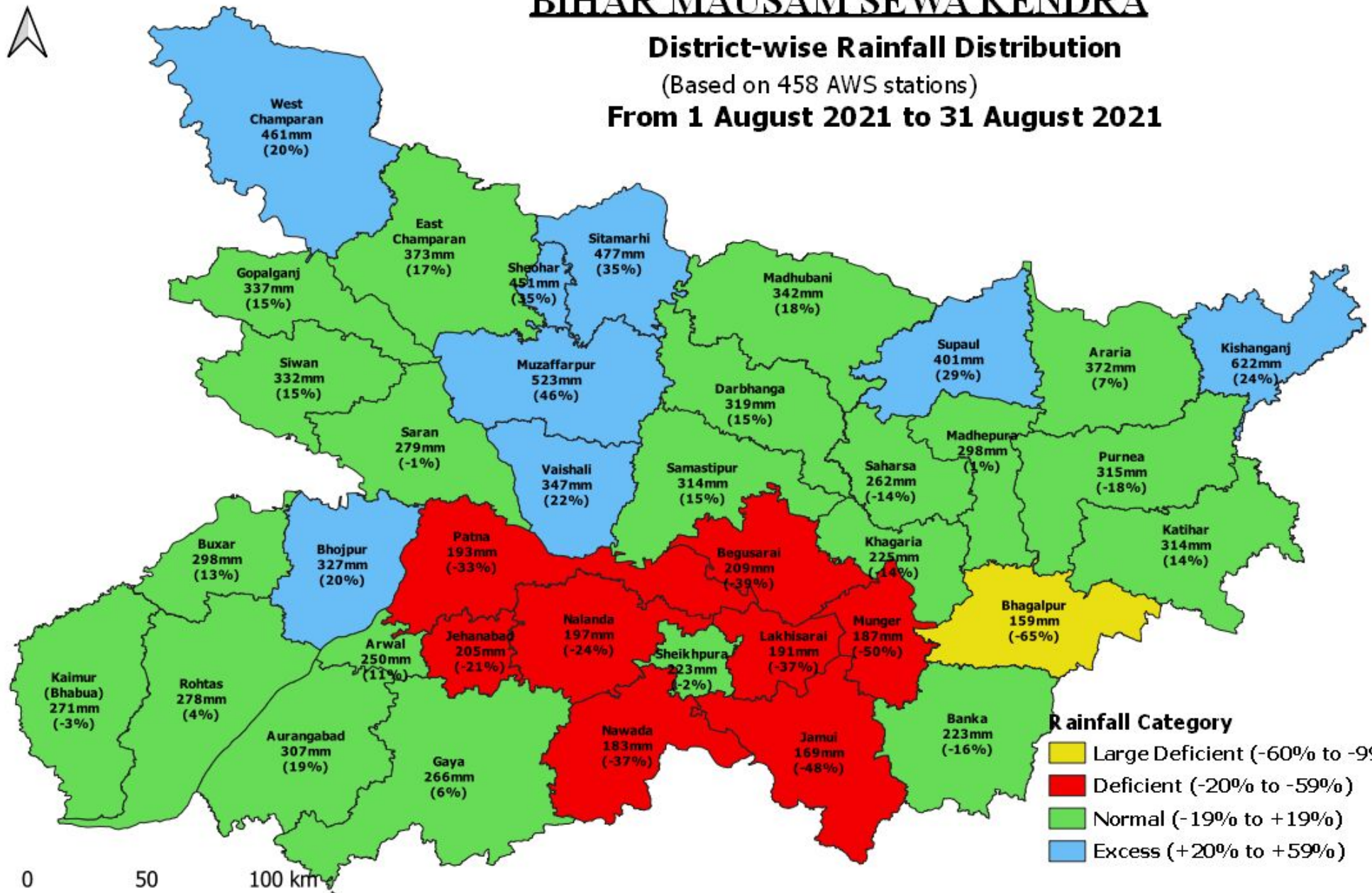


BIHAR MAUSAM SEWA KENDRA

District-wise Rainfall Distribution

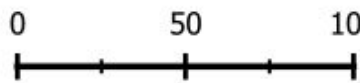
(Based on 458 AWS stations)

From 1 August 2021 to 31 August 2021



Rainfall Category

- Large Deficient (-60% to -99%)
- Deficient (-20% to -59%)
- Normal (-19% to +19%)
- Excess (+20% to +59%)



84°0.000'E

88°0.000'E

27°0.000'N

27°0.000'N

24°0.000'N

24°0.000'N

84°0.000'E

88°0.000'E

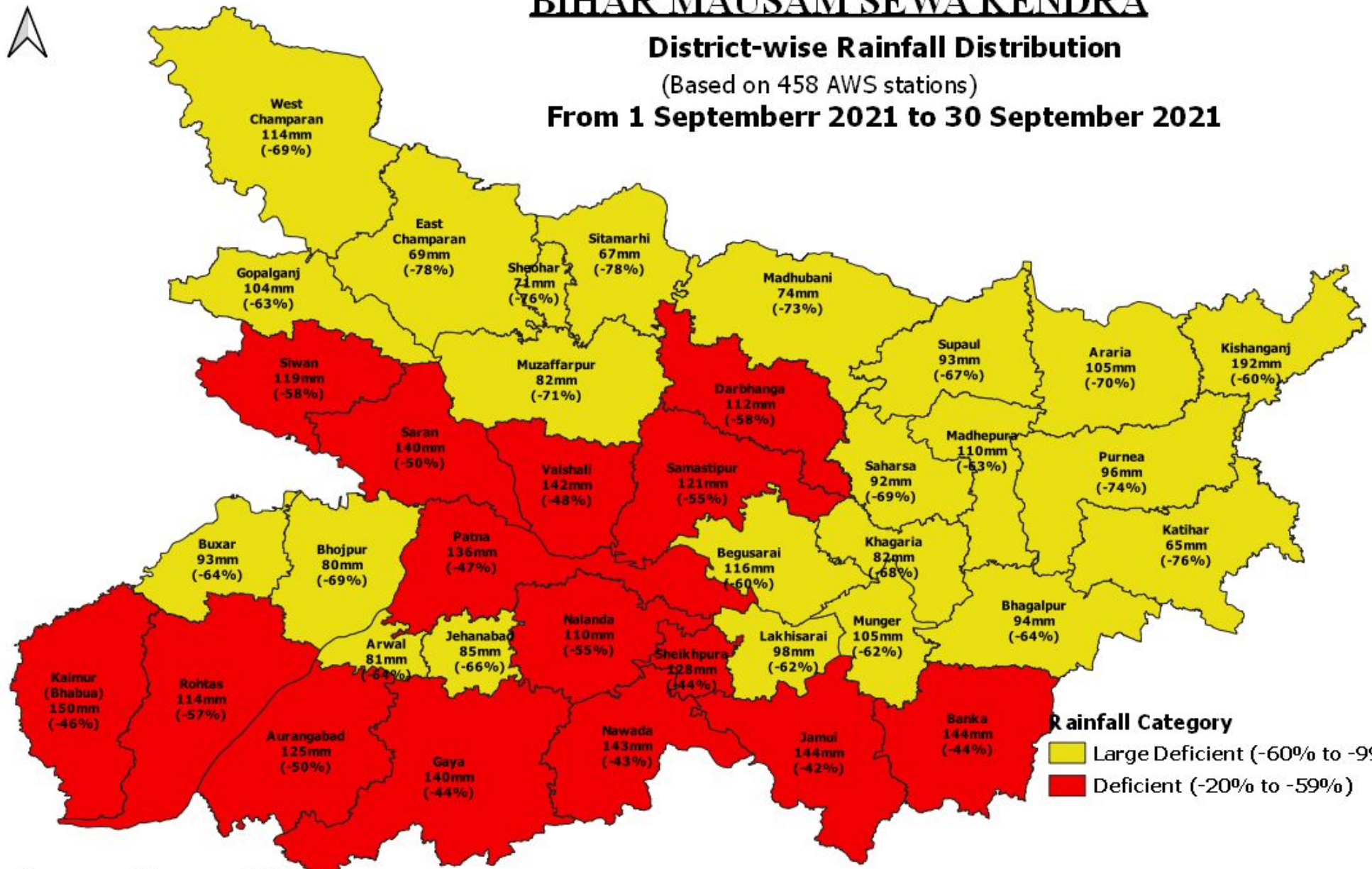


BIHAR MAUSAM SEWA KENDRA

District-wise Rainfall Distribution

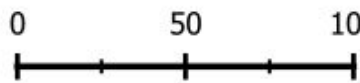
(Based on 458 AWS stations)

From 1 September 2021 to 30 September 2021



Rainfall Category

- Large Deficient (-60% to -99%)
- Deficient (-20% to -59%)



84°0.000'E

88°0.000'E

27°0.000'N

27°0.000'N

24°0.000'N

24°0.000'N